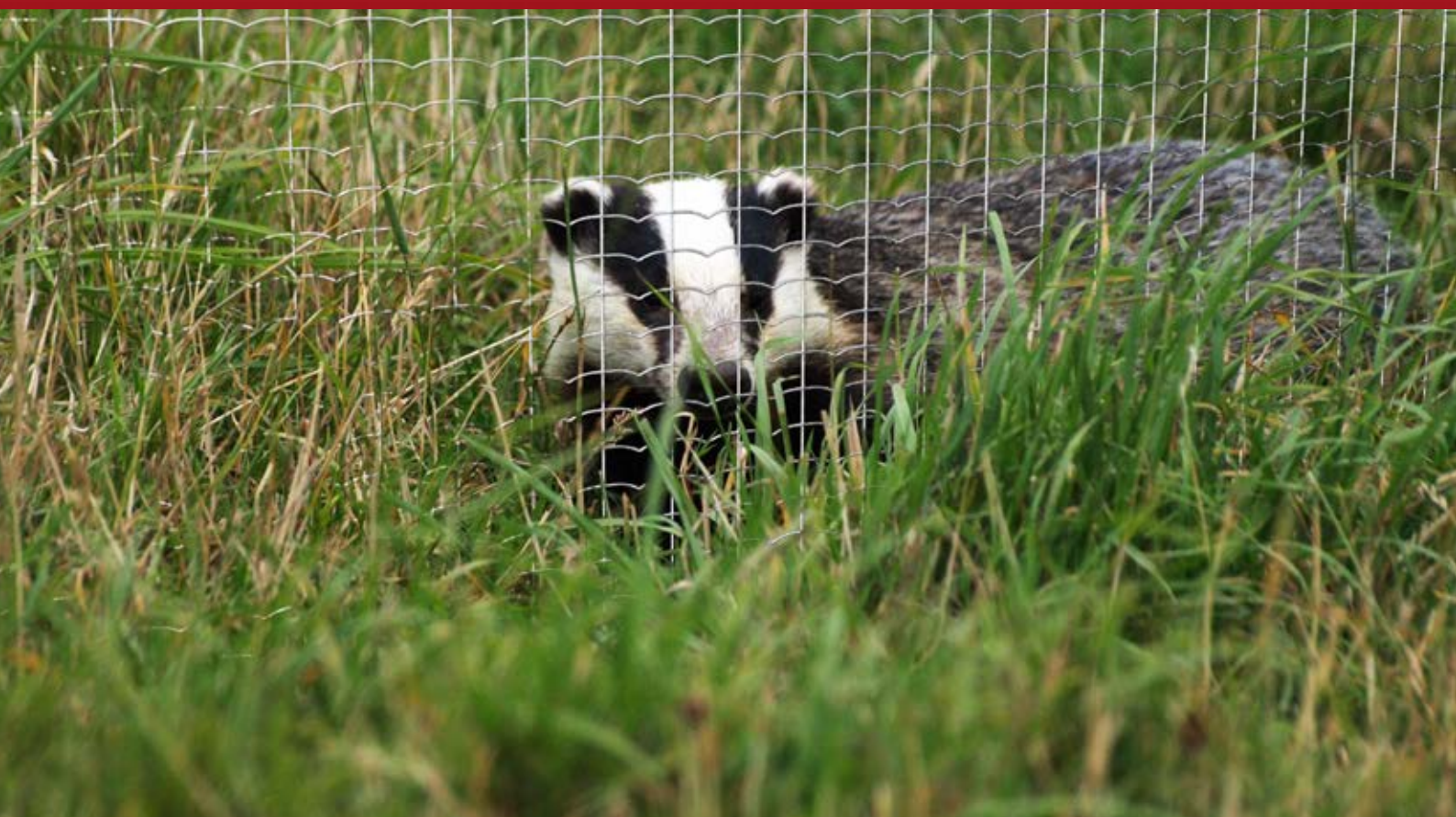


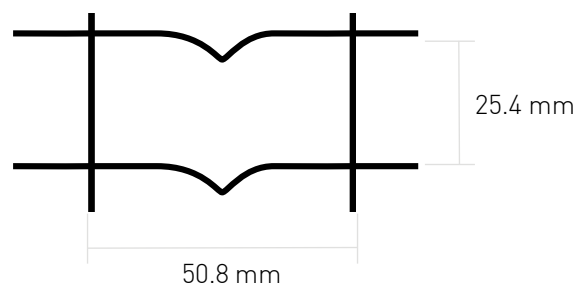
BADGER FENCE



CHARACTERISTICS

The Badger Fence is used to prohibit the access of animals that could damage the vulnerable vegetation and to redirect them to more preferable areas.

- Soft wire.
- Made according to EN 10223-5 standards.
- ZnAl® Class A galvanized according to EN 10244-2 standards.



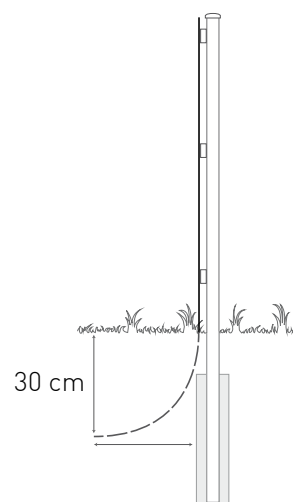
INSTALLATION

In flat areas (not rocky):

- It is recommended to bury part of the mesh folded facing outside.
- Another option is to dig 30 cm, fill it with cement and tie the mesh to the cement.

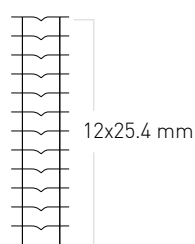
In rocky areas:

- To increase the security, the mesh could be tied to stones with wire.

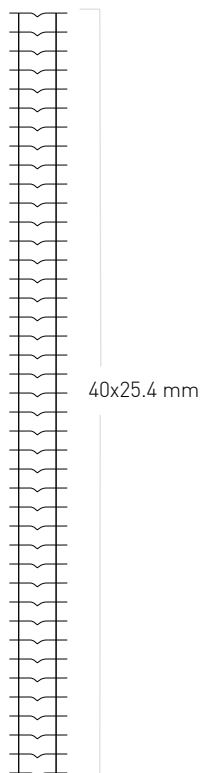




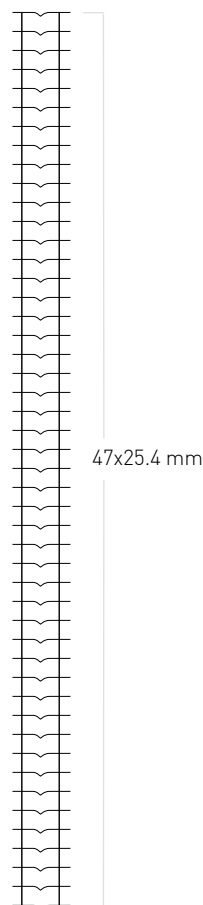
STANDARD DIMENSIONS



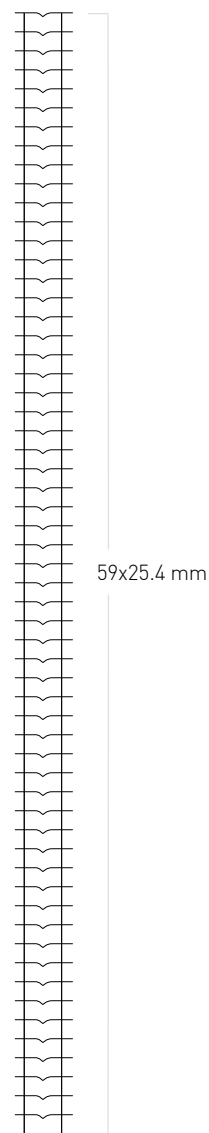
H: 30 cm



H: 100 cm



H: 120 cm



H: 150 cm

Wire diameter (mm)	Mesh space (mm)	Height (cm)	Roll length (m)
2.00	25.4 x 50.8	30	25
		100	
		120	
		150	



OTHER COATING OPTIONS

- ZnAl® Class AB galvanized wire.
- ZnAl® Class B galvanized wire.
- Other standards available (ASTM, SAE, BS, AS/NZS...)

